



GARDEN DESIGN PROCESS

01

The Design Process

02

First Meeting

08

Masterplan Document

04

Second Meeting &
Site Survey

10

Technical Drawings

06

Concept Design

12

Planting Design

The Design Process

Jon Gower designs gardens unique to each client's specific requirements. It's Jon's job to inspire you and show you what is possible in your own garden.

To do this Jon needs to understand your aims and objectives for the space. He'll ask you lots of questions about how you want to use your garden, the elements you'd like included in your design, and how he can make the most of your budget.



First Meeting

This is a free, no obligation visit to meet you and chat about your garden. It gives Jon the opportunity to see the space and understand your general aspirations for your dream garden.

Jon will talk you through the process from design right through to the building of the garden and will be happy to answer all your questions.

Together, you will discuss your budget and preferred timescales. Jon will then send you a quote for the design work discussed, together with his terms and conditions.





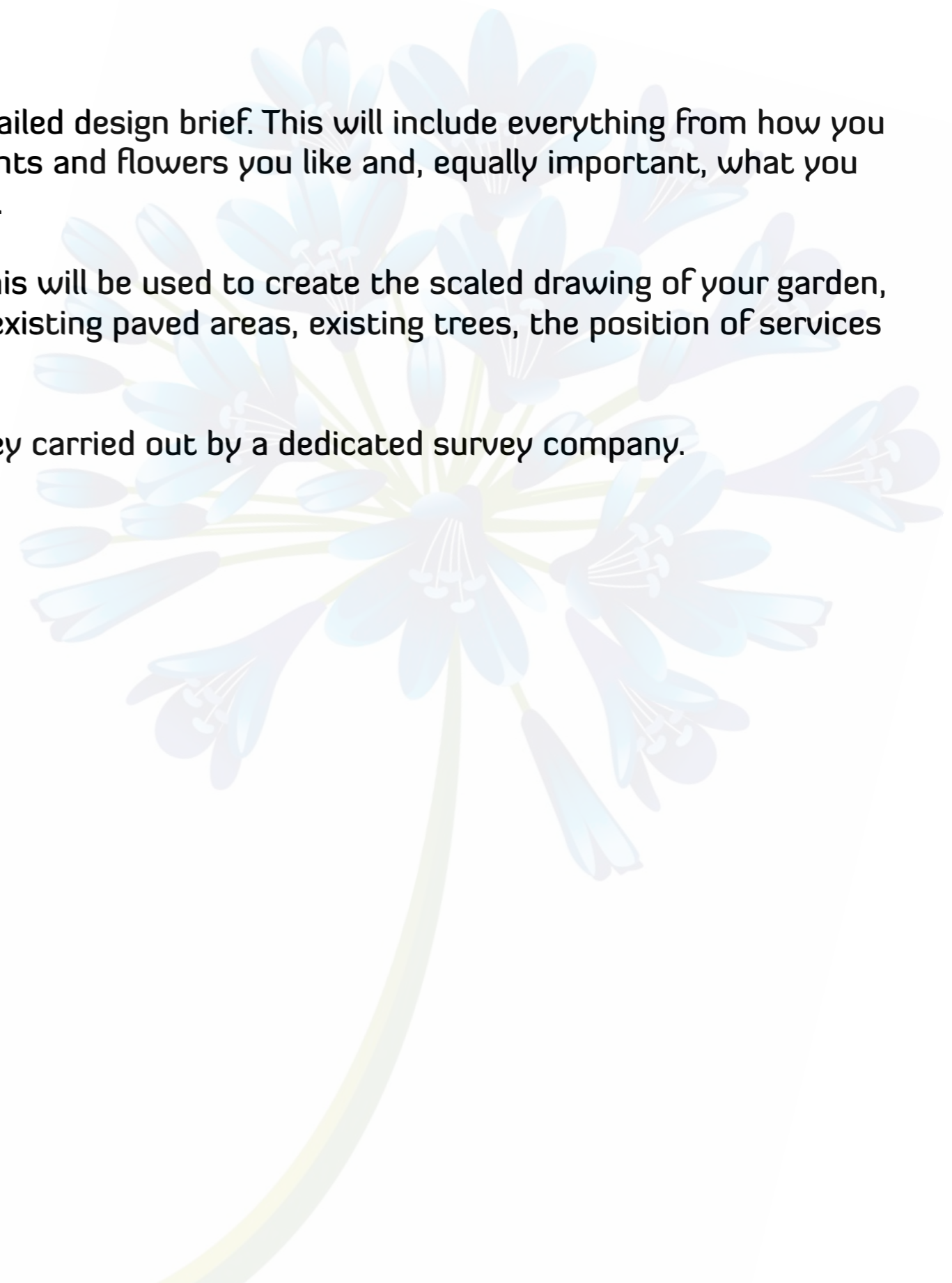
HORKESLEY HAMLET | COLCHESTER | ESSEX

Second Meeting & Sight Survey

The next step is for Jon to spend time with you to develop a detailed design brief. This will include everything from how you wish to use the space, what style of design you prefer, what plants and flowers you like and, equally important, what you don't like, to specific elements or features you would like to see.

At the same visit Jon will carry out a site analysis and survey. This will be used to create the scaled drawing of your garden, which will include the position of the house, levels, boundaries, existing paved areas, existing trees, the position of services (pipes, drainage, etc).

Larger and more complex sites will require a more detailed survey carried out by a dedicated survey company.



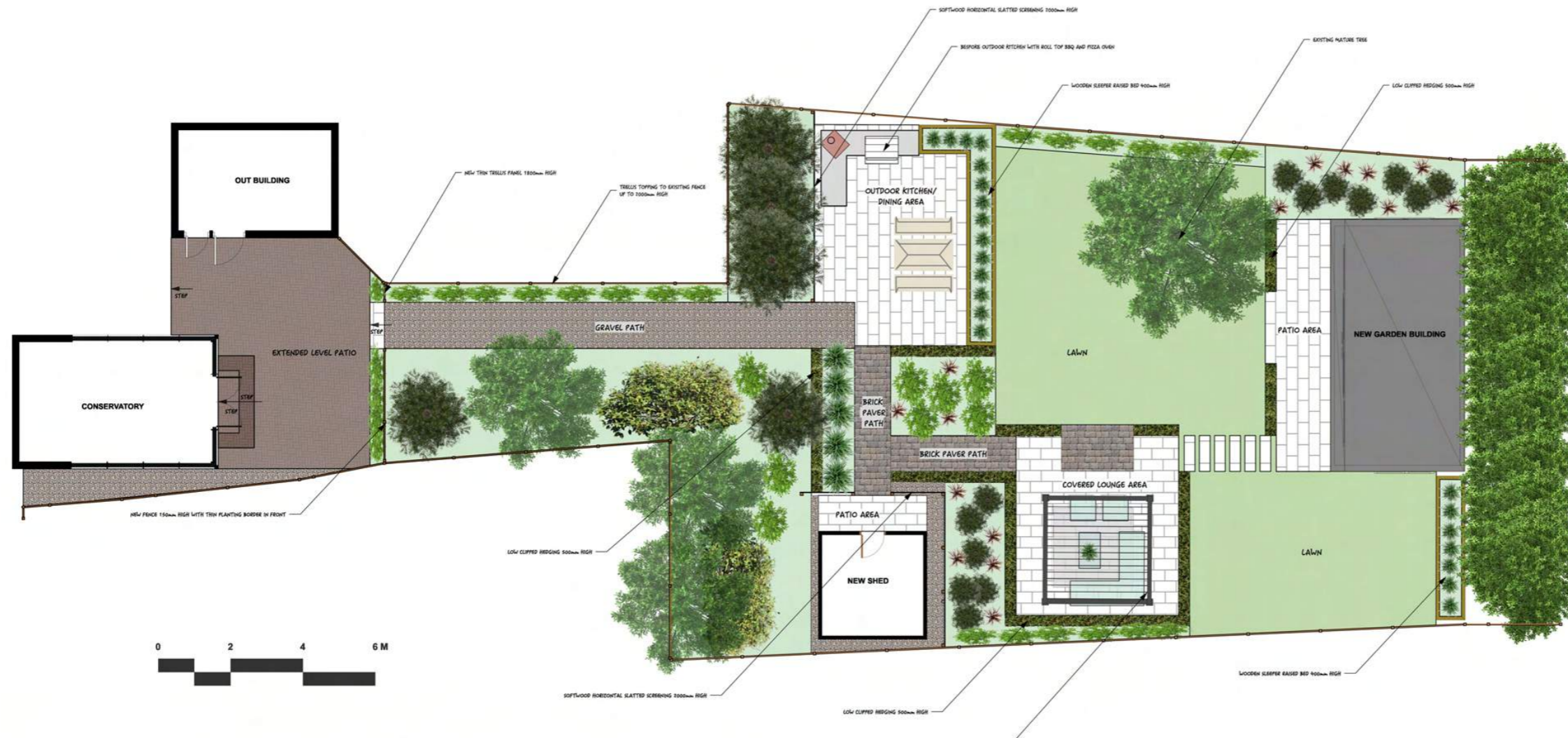


Concept Design

From your design brief, Jon will design the scheme and draw up a scaled 2D layout top plan illustrating the proposed areas of hard landscaping and soft landscaping (plants and lawns) and detailing any changes in levels, walls, steps, water features, and the like.

A moodboard will accompany concepts to help visualise the atmosphere/style/'feel' of the proposed design.

At this stage, a third meeting will take place to discuss the proposal and make any necessary amendments.

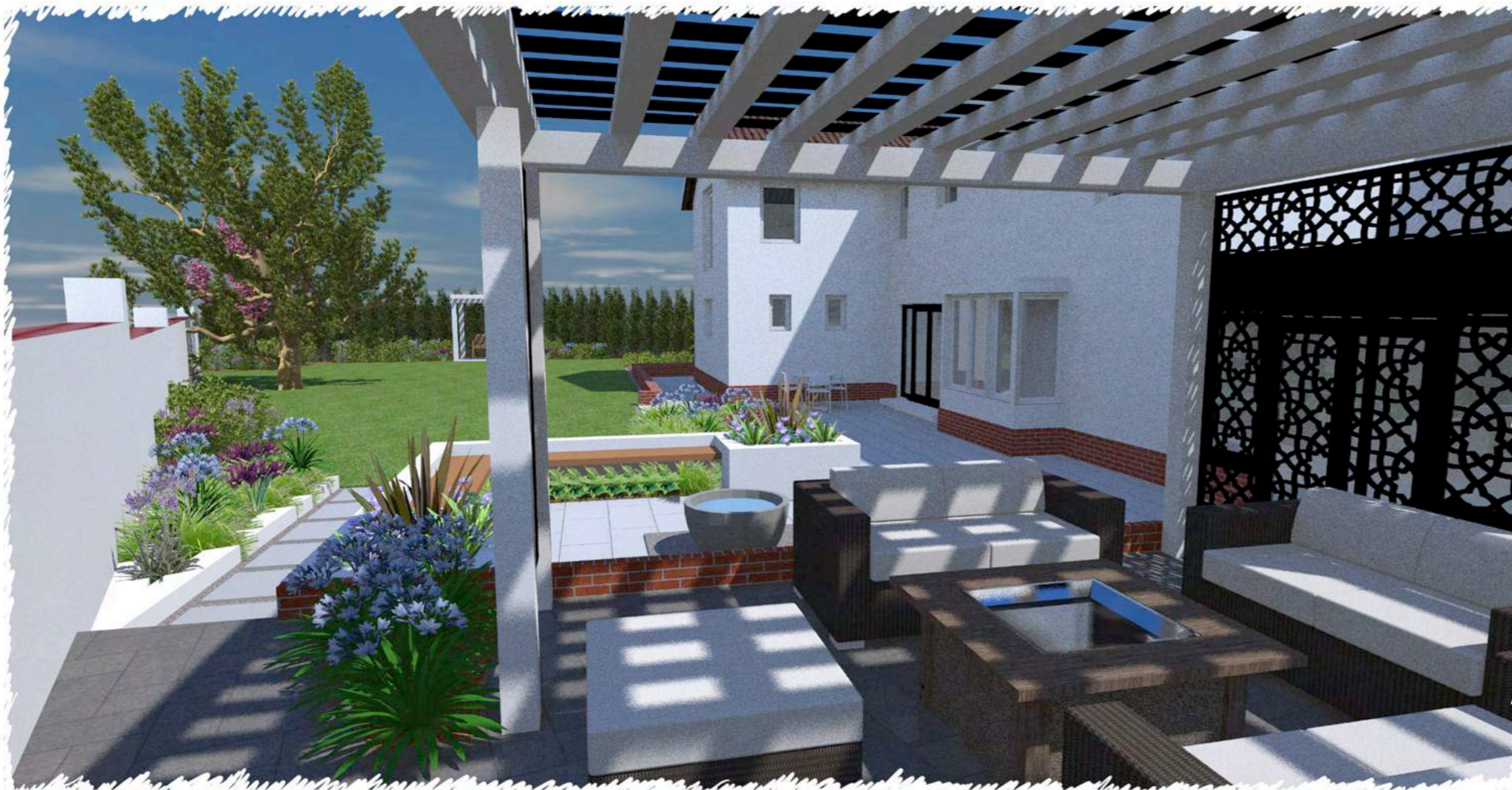




MOOD BOARD

Master Plan Document

Once the concept design has been agreed, using a combination of hand rendered and computer generated designs in both 2D and 3D (depending on your budget), presentation plans are drawn up with full details of hard landscaping, features and design elements to bring the overall design to life.



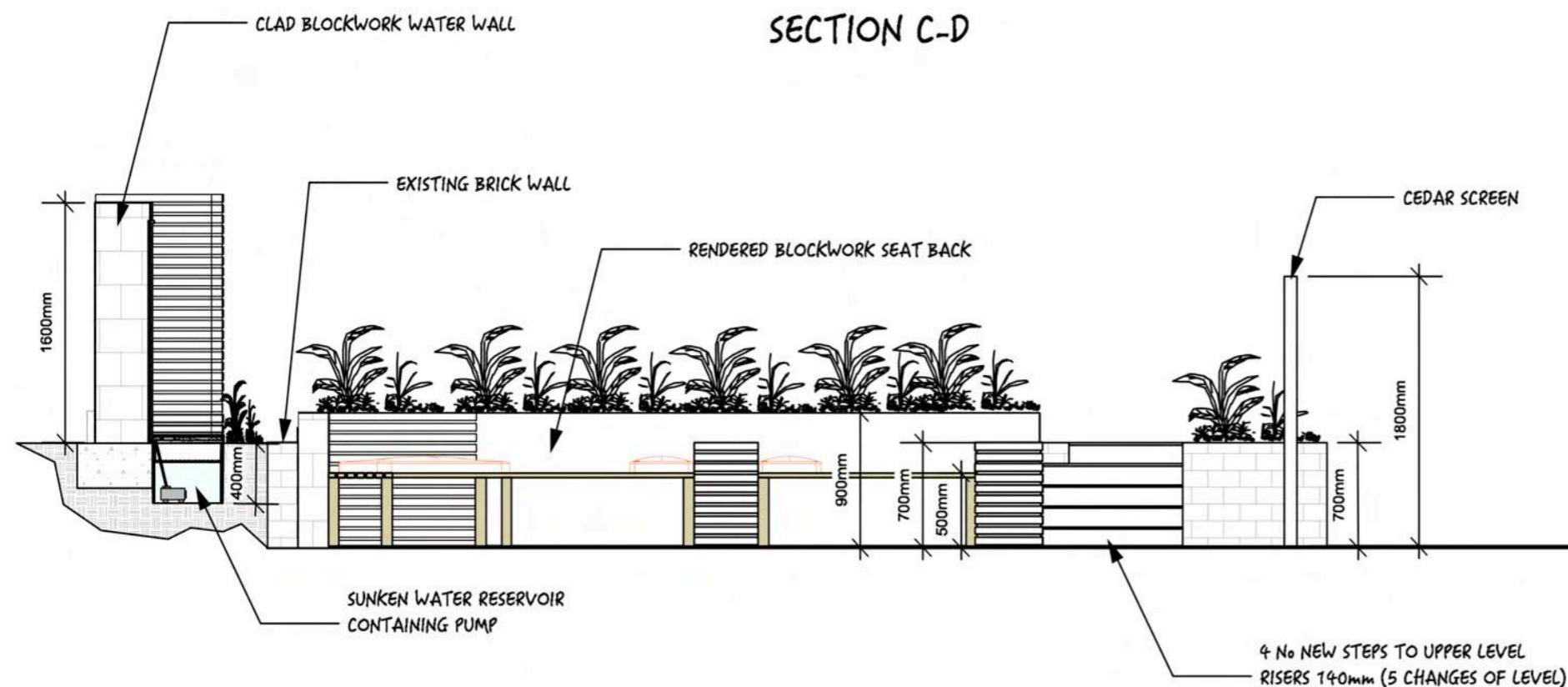


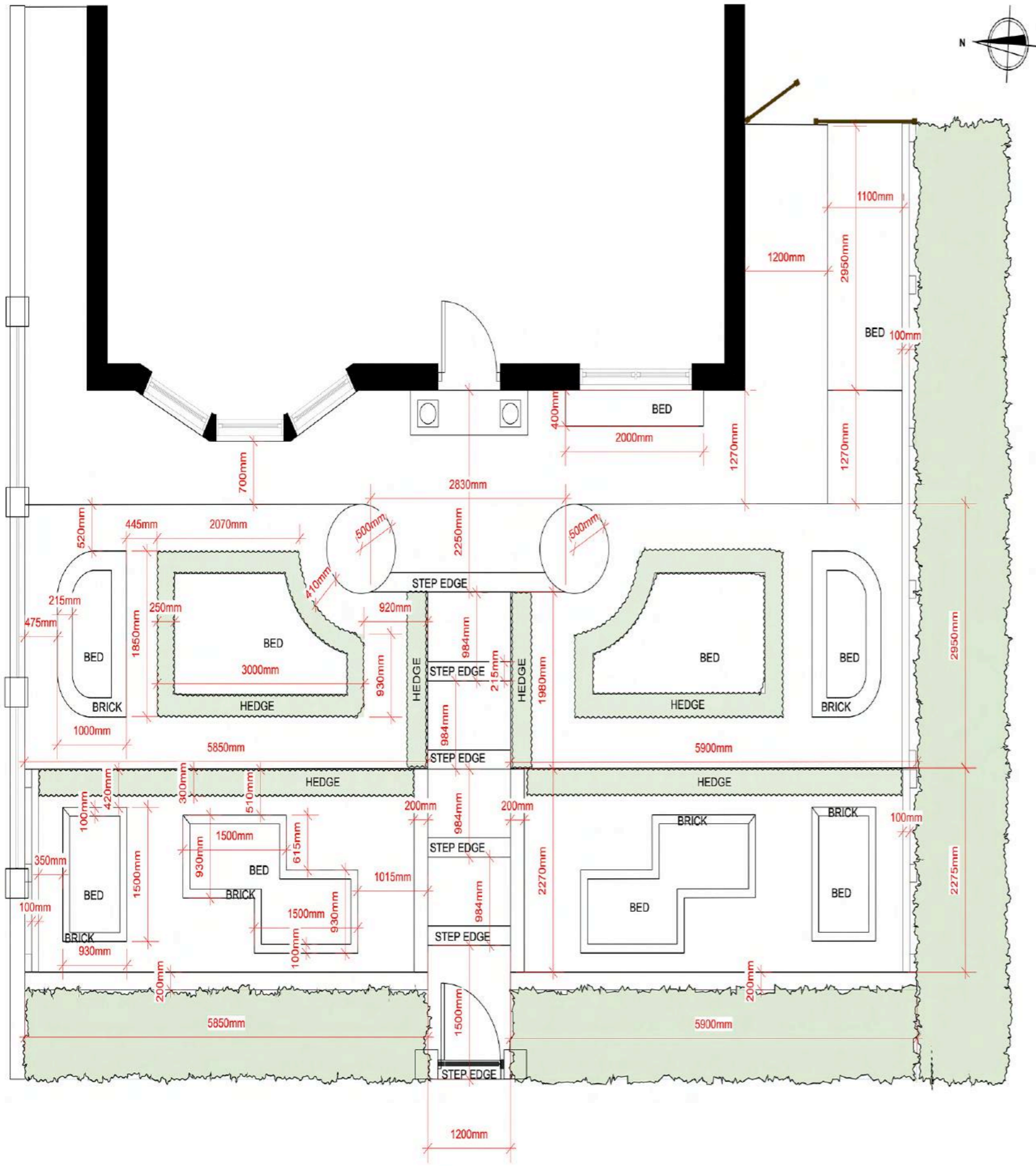
Technical Drawings

Jon will provide all detail construction specifications and drawings required to build the garden. This could be anything from standard retaining wall drawings to a bespoke water feature.

Technical drawings include full setting out plans, levels and construction details to allow landscape contractors to provide a broken-down quotation for the build of the new design.

Having prepared the detailed specification for the construction of your new garden, Jon can then introduce you to accredited landscapers that he has worked with and obtain quotations for the build. Jon can also project monitor the build to ensure that all the design details are created as intended.





Planting Design

A full detailed planting plan will also be created. This will consist of a pictorial view of the plants, detailed planting positions showing the placing of each individual plant and its eventual size, plus a full plant list together with the pot size to be planted at.



1st Draft as at 10am - Fri 23rd Sept 2022

QUANTITY	NAME/ HEIGHT	POT SIZE
SHRUBS		
2	Cupressus Cypress Gold Rider Pom Pon dritto	140/160cm
120	Euonymus "Jean Hugues"	2L
1	Hebe "Wiri Mist"	5L
1	Hydrangea arborescens "Annabelle"	10L
2	Philadelphus "Belle Etoile"	10L
1	Pinus "Edsal Wood"	10L
2	Pittosporum tobira "nanum"	5L
4	Rosa "Iceberg"	5L
1	Skimmia japonica "Fragrans"	5L
4	Thuja occidentalis "Mr. Bowling Ball"	10L
4	Trachelospermum jasminoides	2 metres high
PERENNIALS		
6	Anemone x hybrida "Honorine Jobert"	2L
6	Astrantia "Snow Star"	2L
4	Brunnera macrophylla "Jack Frost"	2L
4	Convolvulus cneorum	2L
2	Cornus canadensis	2L
4	Delphinium "Diamant"	2L
7	Helleborus niger "Christmas Carol"	2L
16	Iris "White Swirl"	2L
4	Leucanthemum x superbum	2L
GRASSES		
2	Carex oshimensis "Everlime"	2L
16	Stipa tenuissima	2L
FERNS		
3	Polystichum setiferum "Herrenhausen"	2L
TOTAL		
216		
PLUS		
30	Allium "Mount Everest" Bulbs	Bulbs
30	Tulip "White Dream" Bulbs	Bulbs



Anemone x hybrida "Honorine Jobert" (Japanese anemone "Honorine Jobert")
 Hebe "Wiri Mist" (Hebe "Wiri Mist")
 Helleborus niger "Christmas Carol" (Christmas rose "Christmas Carol")
 Hydrangea arborescens "Annabelle" (Hydrangea "Annabelle")
 Polystichum setiferum "Herrenhausen" (Soft shield fern "Herrenhausen")



Skimmia japonica "Fragrans" (Skimmia "Fragrans")



Astrantia "Snow Star" (Masterwort "Snow Star")
 Convolvulus cneorum (Shrubby bindweed)
 Delphinium "Diamant" (Delphinium "Diamant")
 Iris "White Swirl" (Iris "White Swirl")
 Leucanthemum x superbum (Shasta daisy)



Rosa "Iceberg" (Rosa "Iceberg")



Trachelospermum jasminoides "Waterwheel" (Confederate jasmine "Waterwheel")



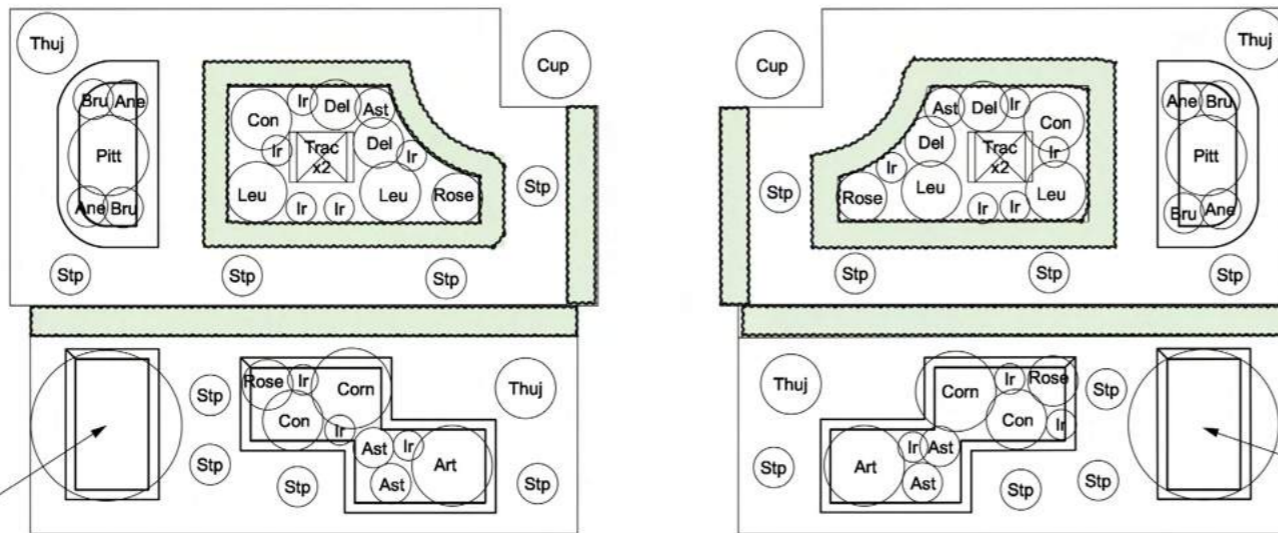
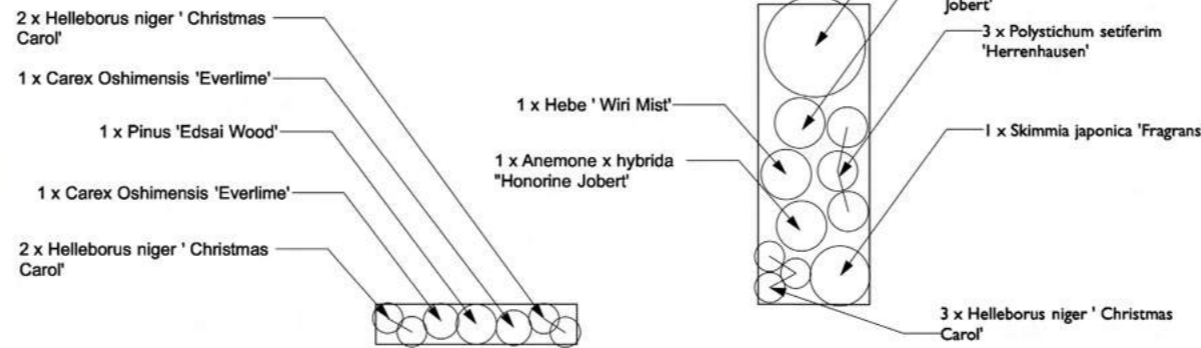
Allium stipitatum "Mount Everest" (Allium "Mount Everest")
 Artemisia "Powis Castle" (Wormwood "Powis Castle")
 Astrantia "Snow Star" (Masterwort "Snow Star")
 Convolvulus cneorum (Shrubby bindweed)
 Cornus canadensis (Dwarf cornel)



Iris "White Swirl" (Iris "White Swirl")
 Philadelphus "Belle Etoile" (Mock orange "Belle Etoile")
 Rosa "Iceberg" (Rosa "Iceberg")
 Stipa tenuissima (Mexican feather grass)
 Tulipa "White Dream" (Tulip "White Dream")



Anemone x hybrida "Honorine Jobert" (Japanese anemone "Honorine Jobert")
 Brunnera macrophylla "Jack Frost" (Siberian bugloss "Jack Frost")
 Pittosporum tobira "Nanum" (Japanese pittosporum "Nanum")
 Thuja occidentalis "Mr. Bowling Ball" (White cedar "Mr. Bowling Ball")



1 x Philadelphus 'Belle Etoile'



Carex oshimensis "Everlime" (Sedge "Everlime")
 Helleborus niger "Christmas Carol" (Christmas rose "Christmas Carol")
 Pinus "Edsal Wood" (Pine "Edsal Wood")



Cupressus arizonica var. glabra "Fastigiata", pom pom form (Smooth Arizona cypress "Fastigiata", pom pom form)

KEY TO ABOVE SECTION

- Ane - 4 x Anemone x hybrida "Honorine Jobert"
- Art - 2 x Artemisia "Powis Castle"
- Ast - 6 x Astrantia "Snow Star"
- Bru - 4 x Brunnera macrophylla "Jack Frost"
- Con - 4 x Convolvulus cneorum
- Corn - 2 x Cornus canadensis
- Cup - 2 x Cupressus Pom Pom
- Del - 4 x Delphinium "Diamant"

- Ir - 16 x Iris "White Swirl"
- Leu - 4 x Leucanthemum x superbum
- Pitt - 2 x Pittosporum tobira "Nanum"
- Rose - 4 x Rosa "Iceberg"
- Stp - 16 x Stipa tenuissima
- Thuj - 4 x Thuja occidentalis "Mr bowling ball"
- Trac - 4 x Trachelospermum jasminoides

BULBS

- 30 x Allium "Mount Everest"
- 30 x Tulip "White Dream"

LOW HEDGING

- 120 x Euonymus japonicas "Jean Hugues" (4 per metre)